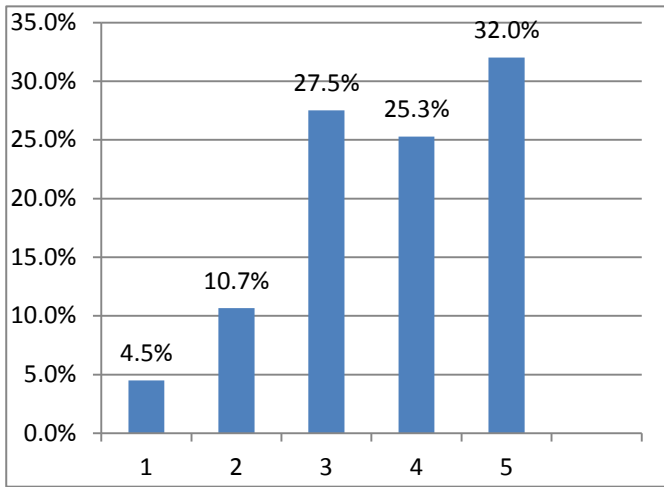
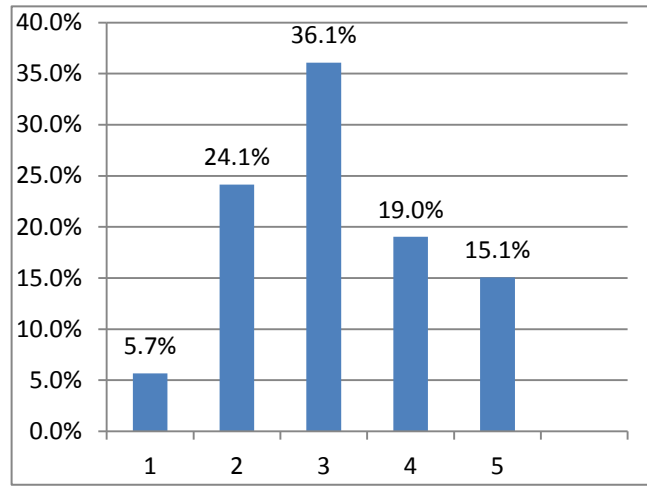


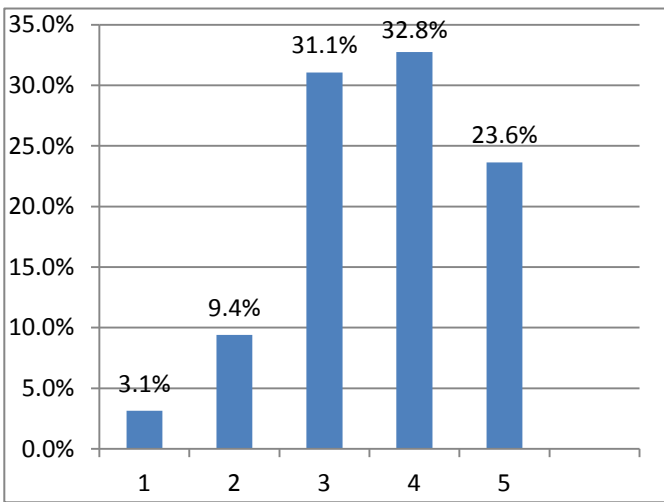
St. Anne Parish Survey Results - 358 Responses (1=lowest rating, 5=highest rating)



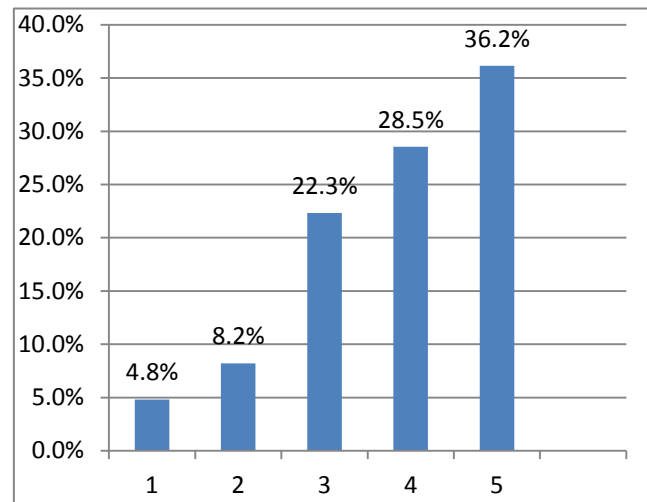
Q1. How informed do you feel about the current state of the priest shortage?



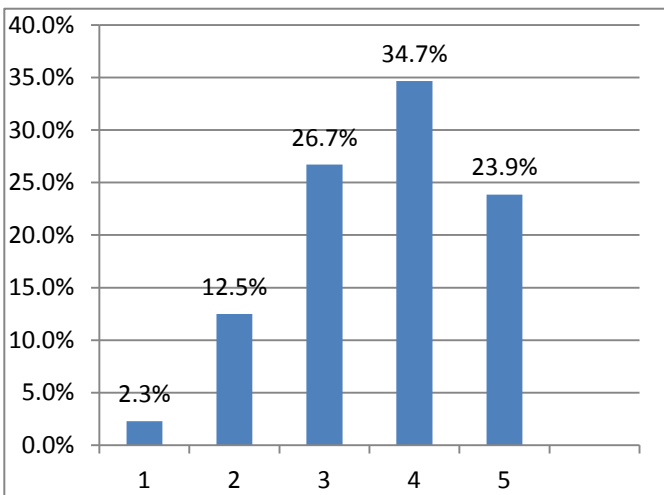
Q2. How do you feel about the future of young adults and young families in your parish?



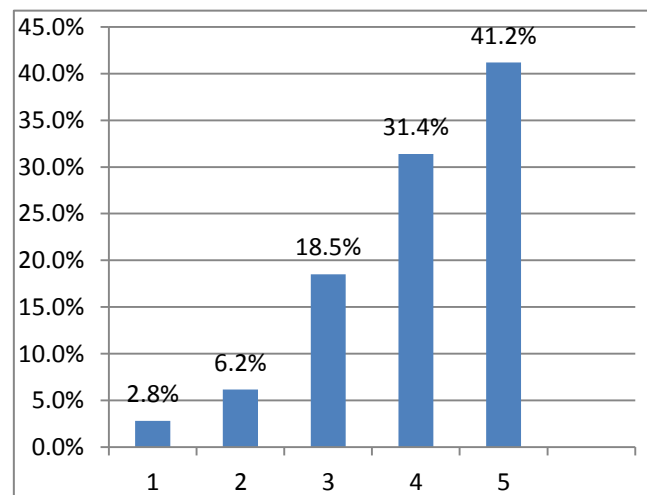
Q3. How do you feel about the cooperation between your parish and other parishes?



Q4. How do you feel about continuing to support Catholic education (volunteering & funding)?

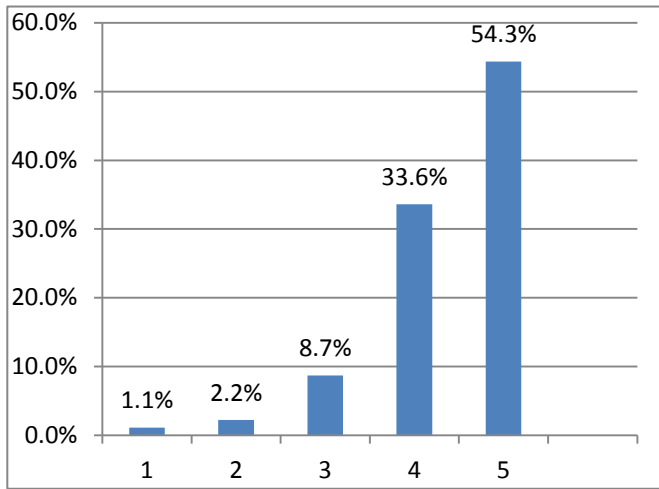


Q5. How informed do you feel about the financial status of your parish?

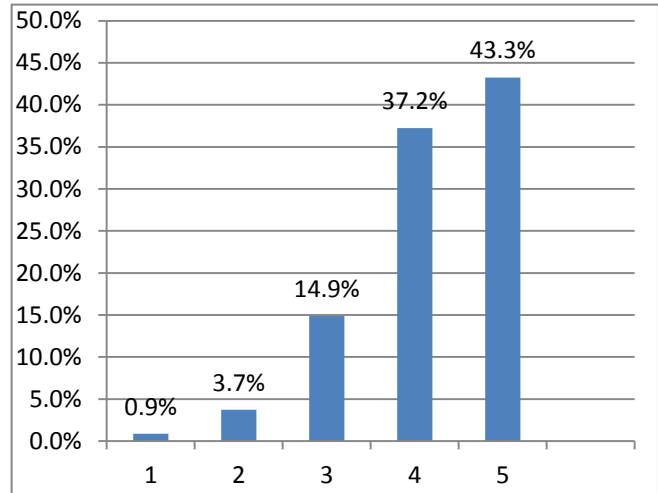


Q6. How well do staff, volunteers, and parishioners make your parish a welcoming place?

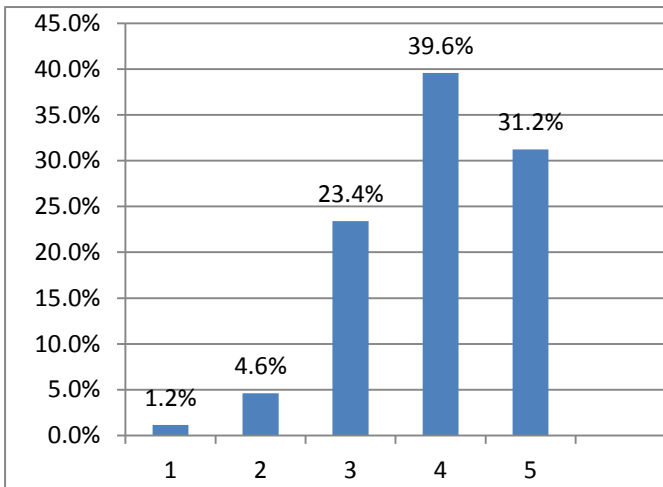
St. Anne Parish Survey Results - 358 Responses (1=lowest rating, 5=highest rating)



Q7. Do you feel the facilities and grounds for your parish are well taken care of?



Q8. Do you feel the staff at your parish is knowledgeable to answer questions?



Q9. How effective is your parish with ongoing faith formation?

Q10. What do you think are are strengths of your parish? (Top 3 answers)

1. Parish members (Long tradition, families, unity, volunteers)
2. Priest (both past and present)
3. Community (friendly, welcoming, activities)

What are your hopes for the future of your parish? (Top 3 answers)

1. St. Anne Parish will continue
2. Growth, especially young people/young families
3. Success of the school

Q11. What are you most concerned about? (Top 4 answers)

1. Lack of participation of youth, young adults, young families
2. Significant cost of the school/low enrollment & revenue of the school
3. Financial stability of St. Anne parish
4. Priest shortage